

# Paediatric Cardiac Workbook



**Created by Carla Sims (2022)**

**Senior Staff Nurse and Clinical Skills Facilitator for Dolphin Ward,  
Bristol Royal Hospital for Children**

With special thanks to  
Alison Wood, Cardiac Nurse Educator, BRHC  
Sheena Vernon, Lead Nurse, South Wales and South West Congenital Heart Disease Network

Based on previous work by Sandra Batcheler, Cardiac/PICU Nurse Educator

## Contents

	Page number
<u>Introduction and Learning Outcomes</u>	3
<u>Foetal Circulation</u>	4
<u>Prostaglandins</u>	5
<u>Cardiac Anatomy</u>	6
<u>Structure of the Heart</u>	8
<u>The Heart Valves</u>	9
<u>Layers of the Heart</u>	11
<u>Branches of the Aortic Arch</u>	12
<u>Conduction System of the Heart</u>	13
<u>Electrocardiogram</u>	16
<u>Cardiac Cycle</u>	17
<u>Common Cardiac Conditions</u>	19
<u>Useful Information</u>	25
<u>Home Monitoring</u>	26
<u>Contacts based at Bristol Royal Hospital for Children</u>	27
<u>South Wales and South West CHD Network Website</u>	27
<u>Reference List</u>	28
<u>Cardiac Education Courses</u>	29
<u>Key Resources</u>	30
<u>Cardiac Charities</u>	32
<u>Feedback and Copyright</u>	36

## Introduction

This workbook is designed to give you an overview of Paediatric Cardiology. There are several activities to complete throughout the workbook. The content may be new knowledge for some and revision for others.

## Aimed at

This workbook is aimed at paediatric nurses working with patients who have congenital heart lesions within the South Wales and South West Network. It aims to cover basic anatomy and physiology of the heart as well as developing knowledge of common cardiac conditions.

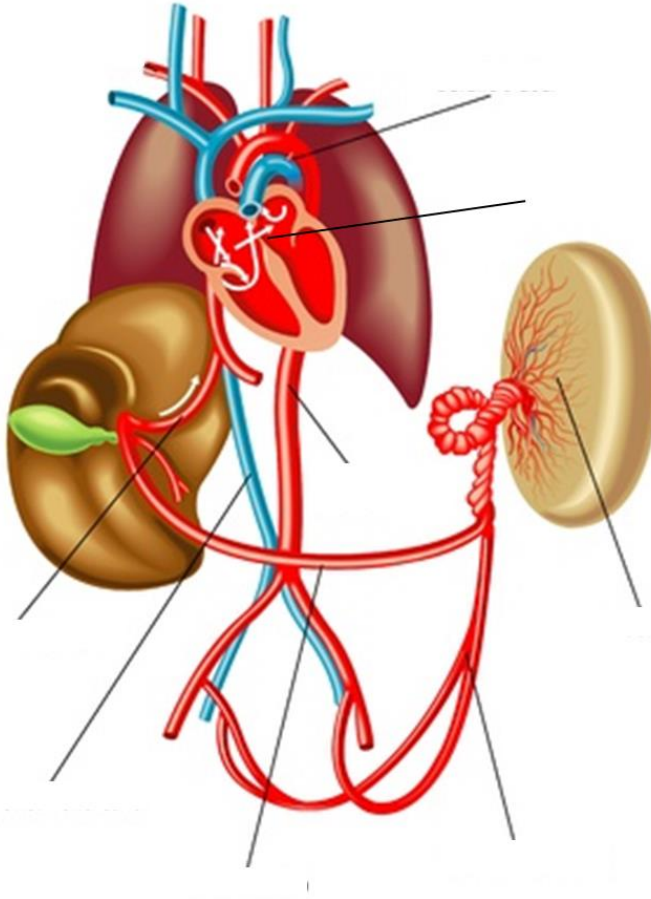
The answers should be discussed with your cardiac link nurse for your centre. This should be in partnership with the education available from the Faculty of Education at Bristol Royal Hospital for Children.

## Learning Outcomes

On completing the workbook, you will be able to:

- Describe foetal circulation and explain the changes that take place after birth
- Discuss the relevance of these changes in relation to altered cardiac anatomy
- Identify the normal position of the heart within the thoracic cavity
- Label a diagram of the key structures of the normal heart and blood vessels
- Identify the key components of the conduction system of the heart and relate this to the ECG and the cardiac cycle
- Recognise common cardiac lesions and describe the altered anatomy and physiology

## Foetal Circulation



**On the diagram, identify the different components of foetal circulation using the following labels:**

- Ductus arteriosus
- Foramen Ovale
- Ductus Venosus
- Placenta
- Inferior vena cava
- Umbilical Vein
- Umbilical Arteries
- Abdominal Aorta

**Describe the changes which take place in the transition between foetal circulation and when the baby is born:**

## Maintaining the patency of the ductus arteriosus with Prostaglandins

In some circumstances it is catastrophic for the ductus arteriosus to close after birth due to abnormalities within the heart and circulation. In these infants an infusion of prostaglandin will be used to maintain the patency of the ductus arteriosus to allow mixing of the systemic and pulmonary blood circuits.

The foetus receives prostaglandin in-utero from the placenta. After birth either Alprostadil (Prostaglandin 1) or dinoprostone (Prostaglandin 2) can be used to maintain the patency of the duct. This is given as a continuous infusion centrally or peripherally, although it can be administered either via the intra-osseous route or orally. The absorption and efficacy via the enteral route can be unreliable so is usually avoided except for emergencies where intravenous access is unavailable or for longer-term use in a stable patient.

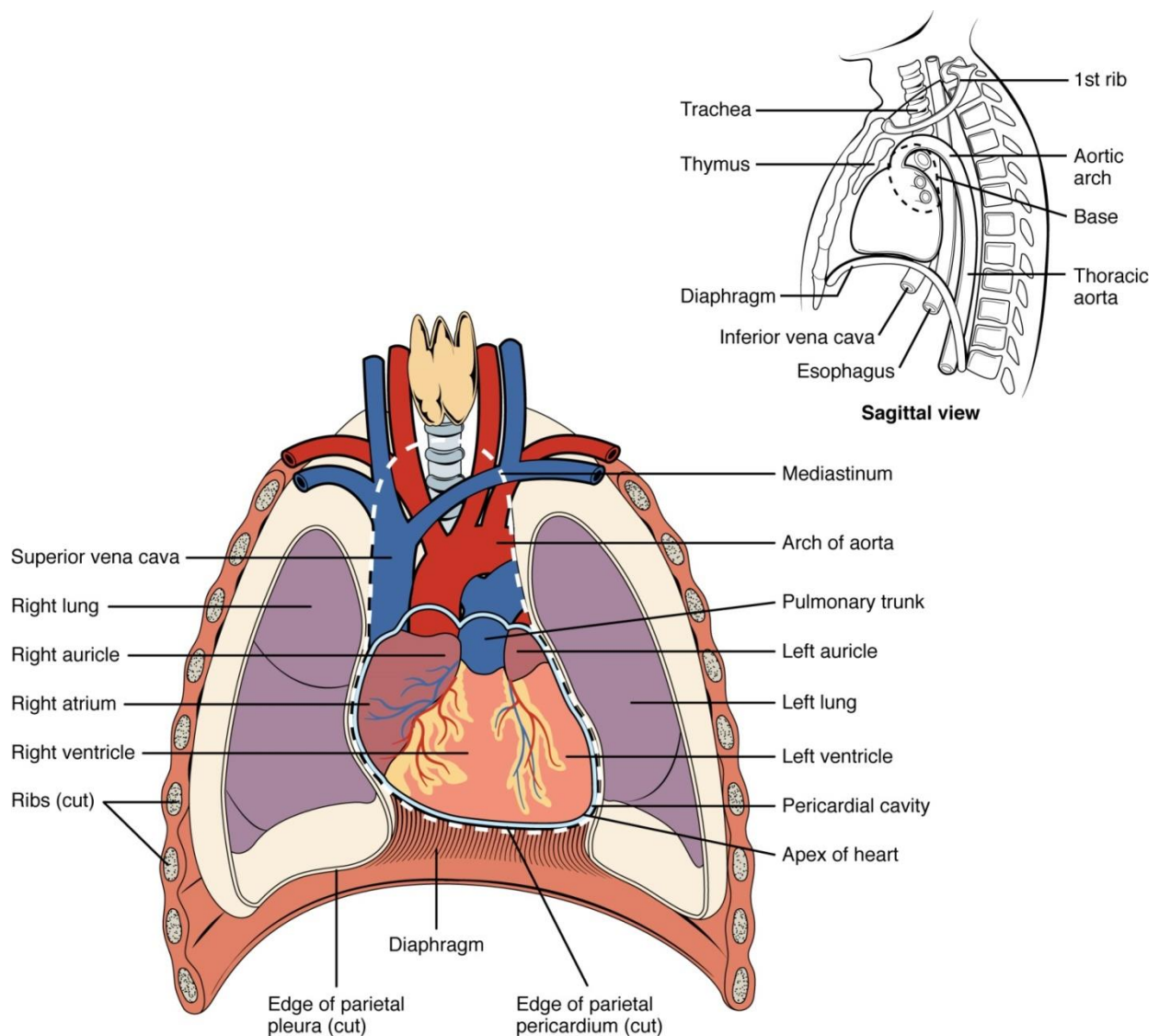
**What cardiac conditions can you think of that may require prostaglandin to maintain ductal patency after birth?**

**What are the side-effects related to administration of dinoprostone (prostaglandin 2)?**

## Cardiac Anatomy

The heart is located in the thoracic cavity, in the mid-sternal region, with approximately two thirds of its mass to the left of the sternum. The heart is roughly the size of the person's closed fist.

The normal position of the cardiac apex is the 5<sup>th</sup> intercostal space in the mid-clavicular line. When the apex of the heart is positioned to the left it is described as levocardia. When the heart is described as dextrocardia it means that the apex is positioned to the right.



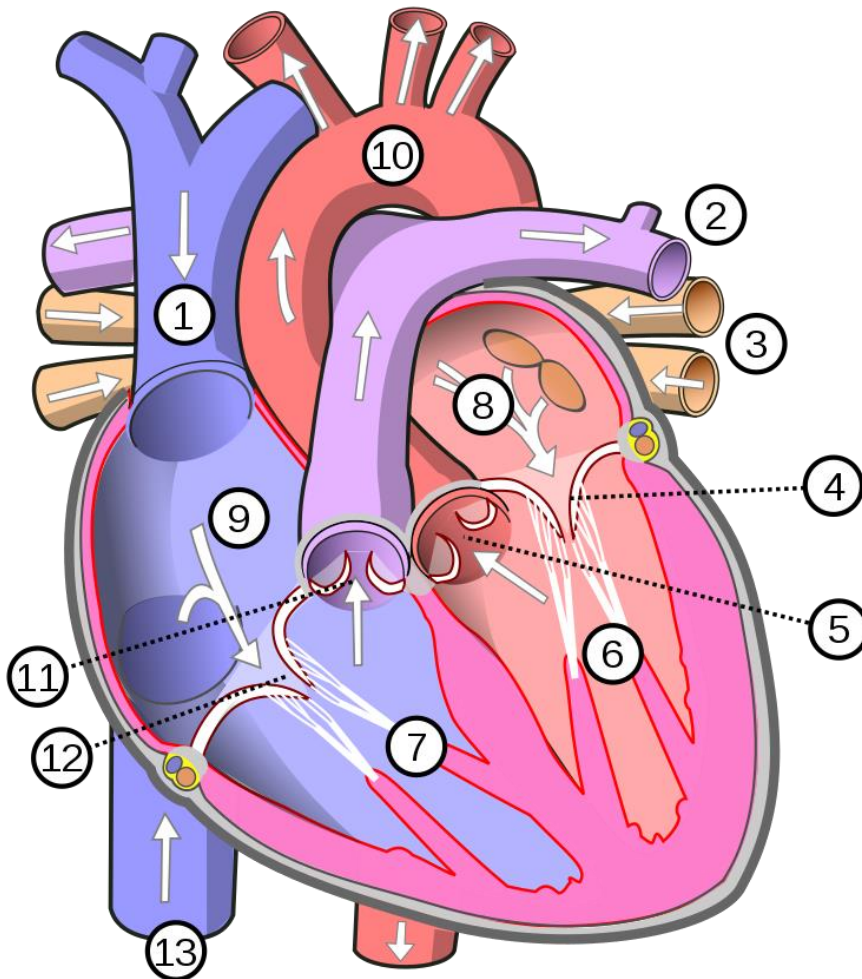
OpenStax College ([https://commons.wikimedia.org/wiki/File:2001\\_Heart\\_Position\\_in\\_ThoraxN.jpg](https://commons.wikimedia.org/wiki/File:2001_Heart_Position_in_ThoraxN.jpg)), „2001 Heart Position in ThoraxN“, <https://creativecommons.org/licenses/by/3.0/legalcode>

**Consider the size of a newborn's heart. What impact does this have on cardiac surgical and interventional cardiology procedures?**

Considerations: Valve size, Conduit size, Weight of the patient

## Structure of the Heart

Label this diagram of the heart and draw the direction of the blood flow. Identify whether the blood is oxygenated or deoxygenated.



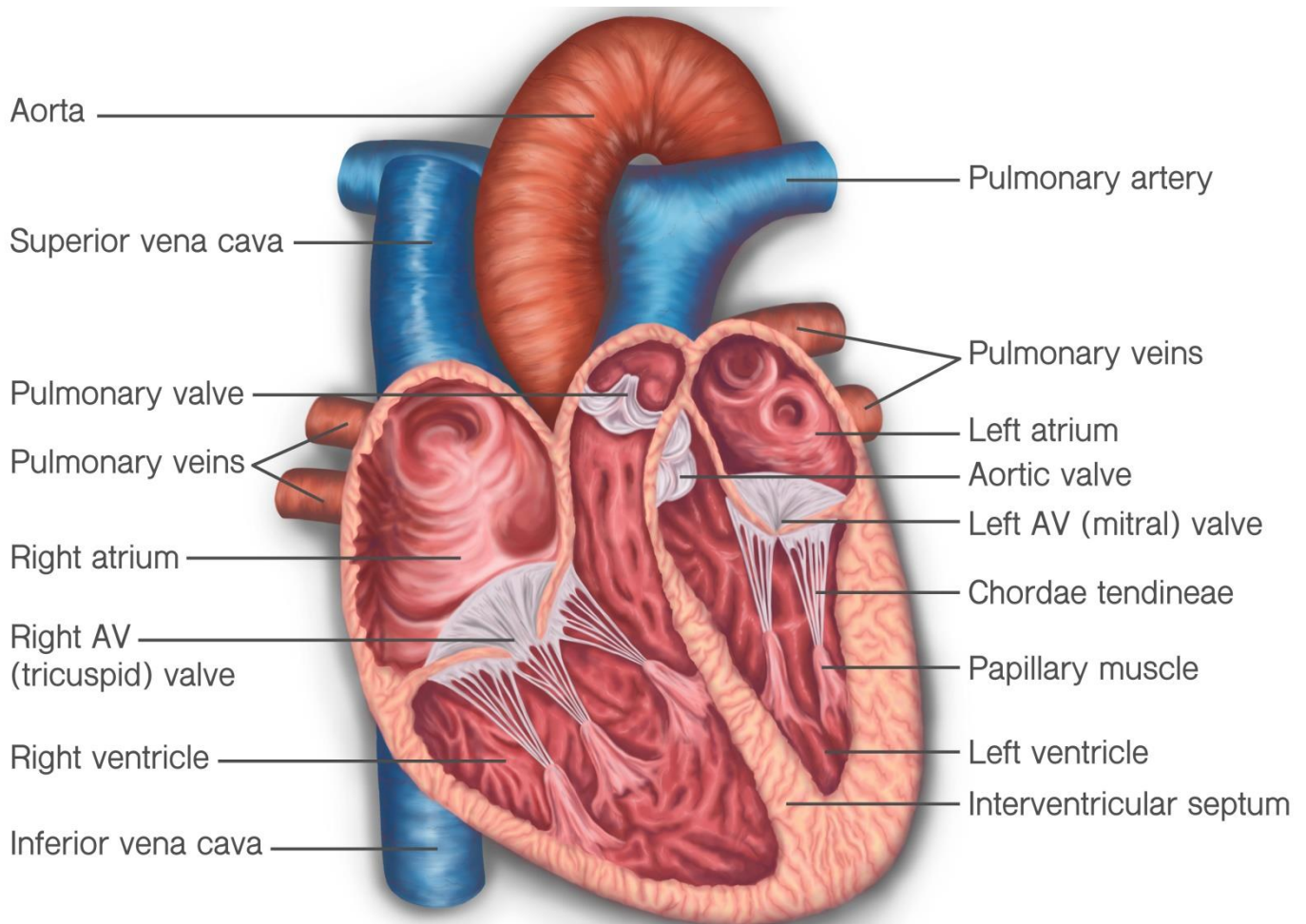
- Aorta
- Pulmonary Artery
- Superior Vena Cava
- Right Atrium
- Right Ventricle
- Left Atrium
- Left Ventricle
- Aortic Valve
- Pulmonary Valve
- Mitral Valve
- Tricuspid Valve
- Inferior Vena Cava
- Pulmonary veins

MesserWoland ([https://commons.wikimedia.org/wiki/File:Diagram\\_of\\_the\\_human\\_heart\\_\(multilingual\).svg](https://commons.wikimedia.org/wiki/File:Diagram_of_the_human_heart_(multilingual).svg)), „Diagram of the human heart (multilingual)“, <https://creativecommons.org/licenses/by-sa/3.0/legalcode>



## The Heart Valves

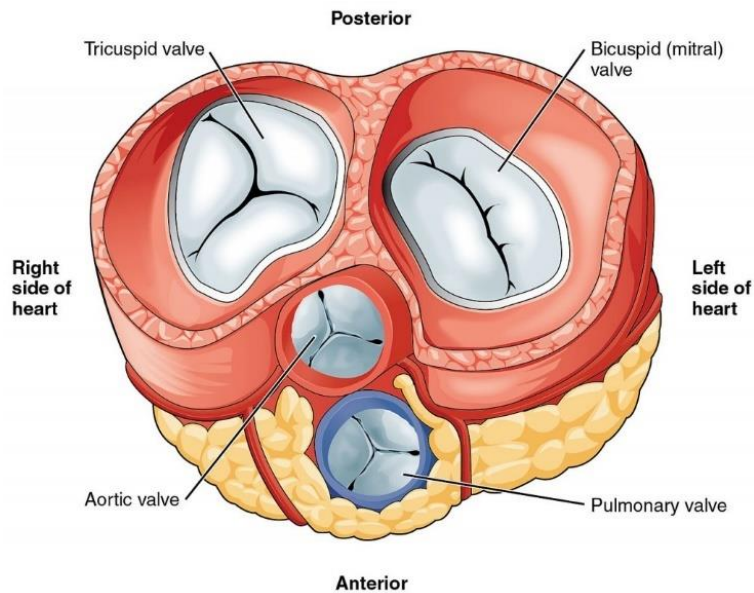
Valves prevent the back flow of blood within the heart. They separate the upper and lower chambers of the heart (atria and ventricles) and the ventricles from the great vessels.



 University of Dundee © University of Dundee School of Medicine. Illustrated by Shereen Kadir. This resource is shared under an Attribution-NonCommercial-NoDerivatives Creative Commons license (CC BY-NC-ND 4.0). You are free to copy and reuse this for non-commercial purposes but we ask that you acknowledge the University of Dundee when doing so. If you remix or modify this material, you may not distribute the modified material.

© University of Dundee School of Medicine. Illustrated by Shereen Kadir.  
This resource is shared under an Attribution-NonCommercial-NoDerivatives Creative Commons license (CC BY-NC-ND 4.0).

The image below shows the four valves of the heart visible with the atria and great vessels removed.



OpenStax College ([https://commons.wikimedia.org/wiki/File:2011\\_Heart\\_Valves.jpg](https://commons.wikimedia.org/wiki/File:2011_Heart_Valves.jpg)), „2011 Heart Valves“, <https://creativecommons.org/licenses/by/3.0/legalcode>

**Name the two atrioventricular valves.**

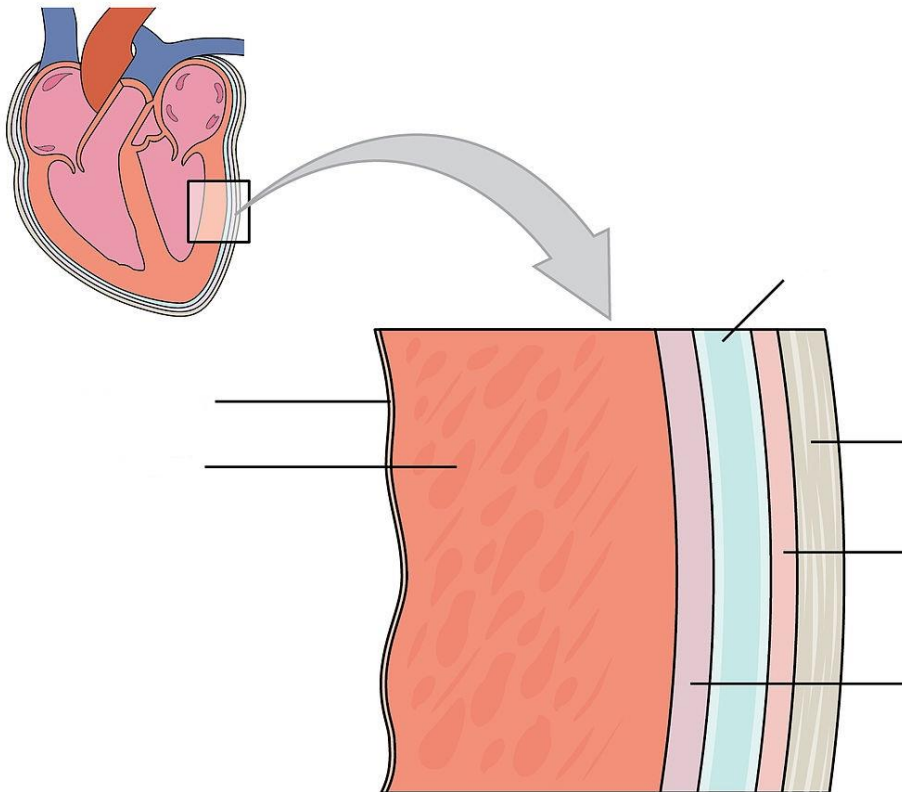
**How many leaflets does each have?**

**Name the two semilunar valves.**

**How many leaflets does each have?**

**If the valves are ‘incompetent’, what does this mean and what is the consequence for blood flow?**

## Layers of the Heart



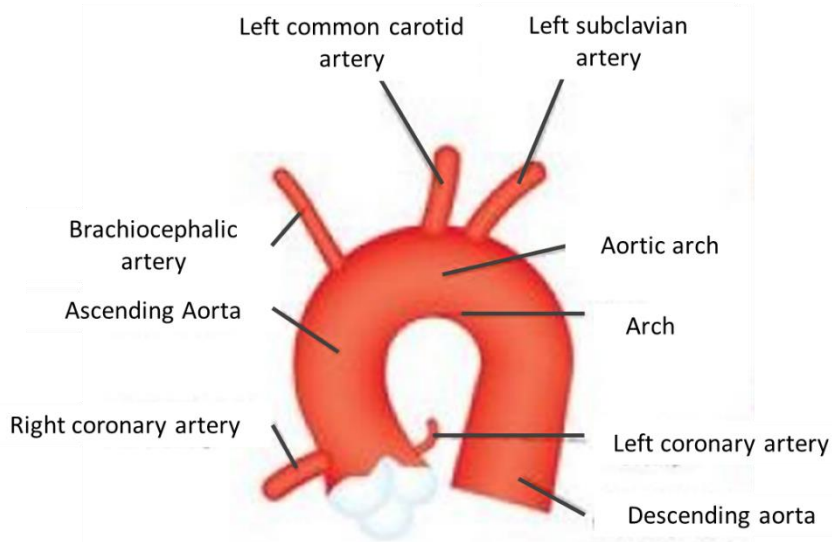
OpenStax College ([https://commons.wikimedia.org/wiki/File:2004\\_Heart\\_Wall.jpg](https://commons.wikimedia.org/wiki/File:2004_Heart_Wall.jpg)), „2004 Heart Wall“, remove labels by Alison Wood, <https://creativecommons.org/licenses/by/3.0/legalcode>

**Label the layers of the heart using the following labels:**

Pericardial cavity  
Fibrous pericardium  
Parietal layer of serous pericardium  
Visceral layer of serous pericardium (epicardium)  
Endocardium  
Myocardium

**What is important about the structure of each of the layers in relation to their function?**

## Branches of the Aortic Arch



Major arteries Superior to the heart

**Label the three vessels which arise from the aortic arch.**

**Where do the coronary arteries arise from?**

**What is the main difference when comparing coronary perfusion to systemic perfusion?**

**To where do the coronary veins drain?**

## Conduction System of the Heart

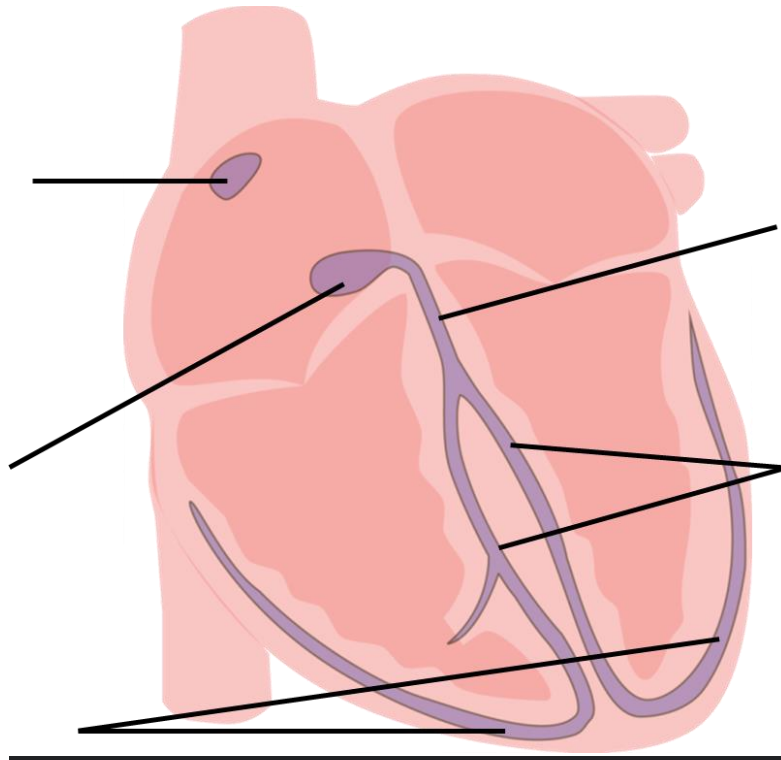
The heart possesses the property of auto rhythmicity, which means it generates its own electrical impulses and beats independently of nervous or hormonal control. It is supplied with both sympathetic and parasympathetic nerve fibres, which increase and decrease respectively the intrinsic heart rate.

In addition, the heart responds to a number of circulating hormones, including adrenaline and thyroxine. Small groups of specialised neuromuscular cells in the myocardium initiate and conduct impulses, causing coordinated and synchronised contraction of the heart muscle.

**Describe the pathway of the electrical impulse as it passes through the heart.**

**On this diagram (page 14) identify:**

Sinoatrial node    Atrioventricular node    Bundle of His    Purkinje Fibres  
Right and Left Bundle Branches



U Bhalraam ([https://commons.wikimedia.org/wiki/File:Heart\\_vector\\_electrical\\_rest.png](https://commons.wikimedia.org/wiki/File:Heart_vector_electrical_rest.png)), added labels blank by Alison Wood, <https://creativecommons.org/licenses/by-sa/4.0/legalcode>

## Depolarization / Repolarization

Heart muscle cells are polarized at rest. The inside of the membrane is negatively charged due to ion concentrations being different on either sides of the cell membrane. During depolarization the cell undergoes a change in the electrical charge distribution resulting in a less negative charge inside the cell. This causes contraction of the cardiac myocyte and therefore contraction of the heart muscle.

Repolarization occurs as the cells return to their original, negatively-charged state and the cardiac muscle relaxes

## **PACEMAKER**

The SA node is the heart's natural pacemaker. The SA node consists of a cluster of cells that are situated in the upper part of the wall of the right atrium (the right upper chamber of the heart). These cells are electrically unstable and discharge or depolarize regularly causing the atria to contract.

If the SA node suddenly stops working, however, the heart has "backup generators" that will take over. One of these backups is the atrioventricular node, which can maintain a heart rate of about 50 to 60 beats per minute. This is the rate that you may see in heart block.

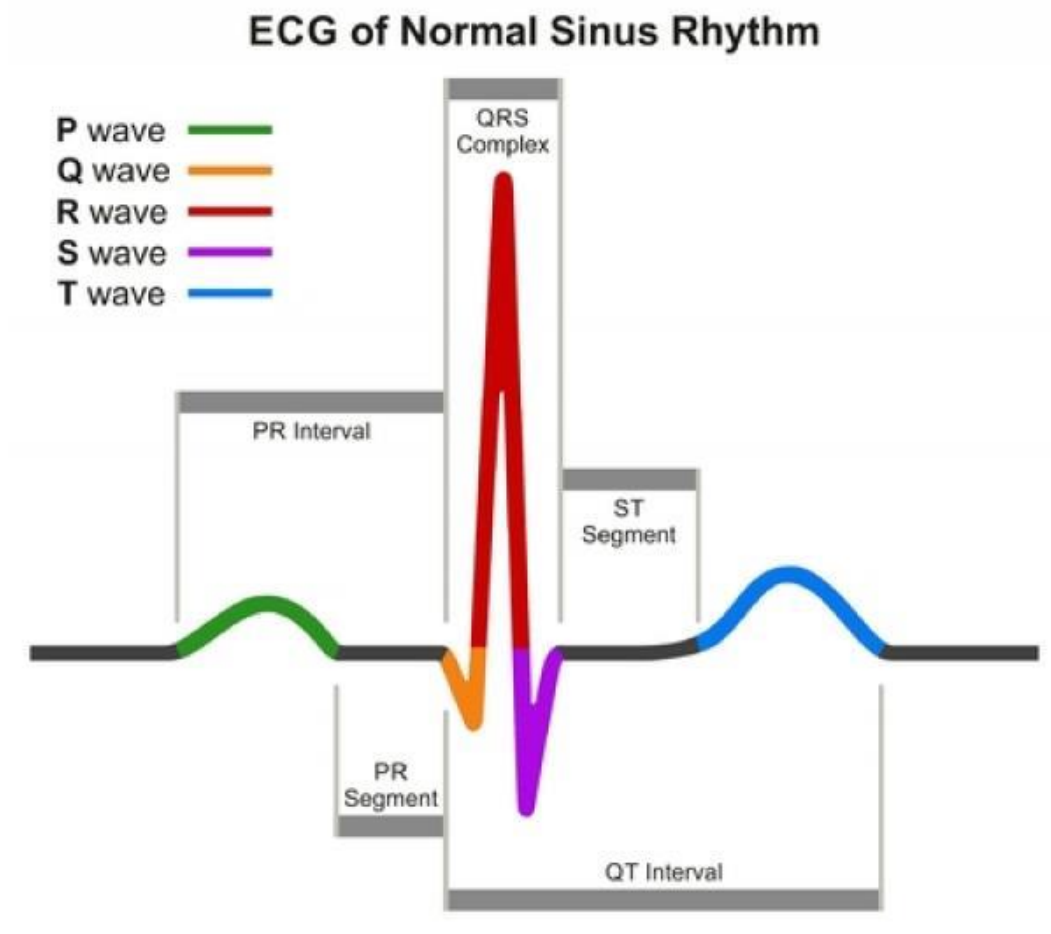
## Electrocardiogram (ECG)

The electrical activity within the heart can be detected with the use of an ECG monitor. The normal ECG pattern shows five waves with are identified using the letters P, Q, R, S and T.

P wave – the electrical impulse travels across the atria from the sino-atrial node to the atrioventricular (AV) node, initiating atrial contraction. This is followed by a pause where the electrical impulse is held by the AV node

Q, R, S waves or complex – the impulse passes from the atrioventricular node, down the Bundle of His, the right and left bundle branches and through the Purkinje fibres. This electrical activity causes contraction of the ventricles

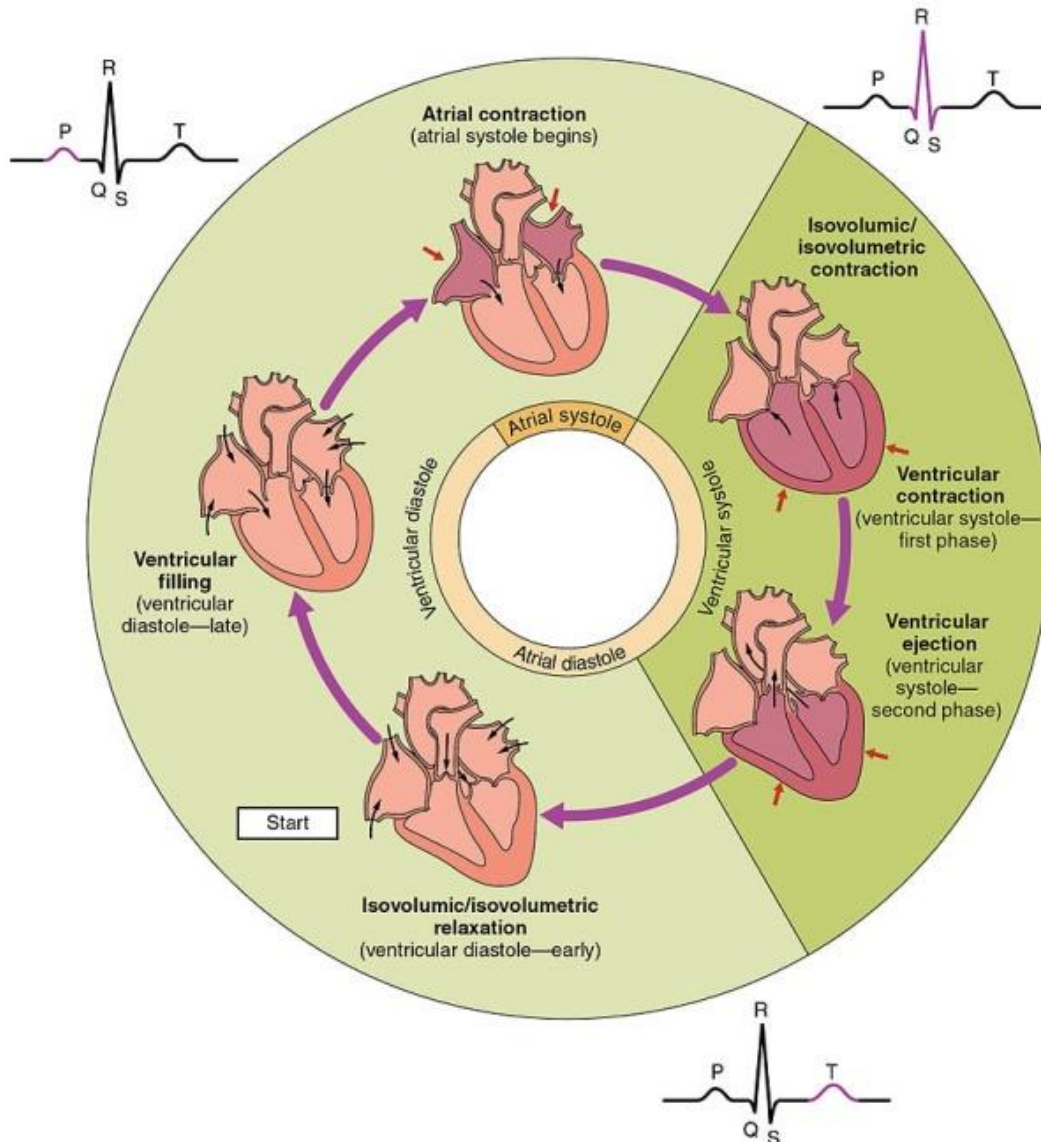
T wave – the ventricular muscle cells are repolarizing and the ventricles relax. Atrial repolarization is hidden on the ECG by the QRS complex





## The Cardiac Cycle

The cardiac cycle refers to the complete process of filling and emptying the heart of blood from the beginning of one heart beat to the next. This comprises systole (contraction of the heart muscle) and diastole (relaxation of the heart muscle).



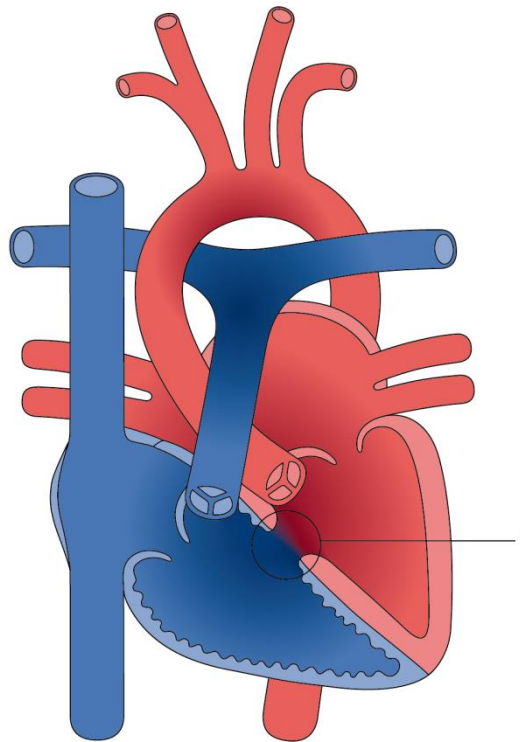
OpenStax College ([https://commons.wikimedia.org/wiki/File:2027\\_Phases\\_of\\_the\\_Cardiac\\_Cycle.jpg](https://commons.wikimedia.org/wiki/File:2027_Phases_of_the_Cardiac_Cycle.jpg)), „2027 Phases of the Cardiac Cycle“, <https://creativecommons.org/licenses/by/3.0/legalcode>

**Describe the activity within the heart at each stage in the cardiac cycle represented in the diagram on page 17**

## Common Cardiac Conditions

There are a multitude of cardiac conditions and each child will present differently. There is a list of resources at the end of this workbook that will help you to find more information about different cardiac anomalies. Use the questions in the tables to help you gain a deeper understanding of the cardiac conditions listed.

### VENTRICULAR SEPTAL DEFECT (VSD)



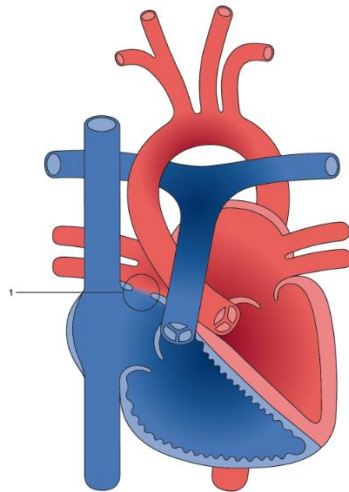
University  
of Basel  
New Media Center

This is the most common congenital heart defect, affecting about a third of all patients with CHD and can often be present with other heart problems. The severity of the condition will vary from patient to patient. The defect may run in families and may also occur with other genetic problems such as chromosomal abnormalities.



## **ATRIAL SEPTAL DEFECT**

Atrial septal defects are also relatively common, affecting up to 10% of patients with congenital heart disease. Spontaneous closure of the defect occurs by 2 years of age in 50% of cases detected in early infancy.

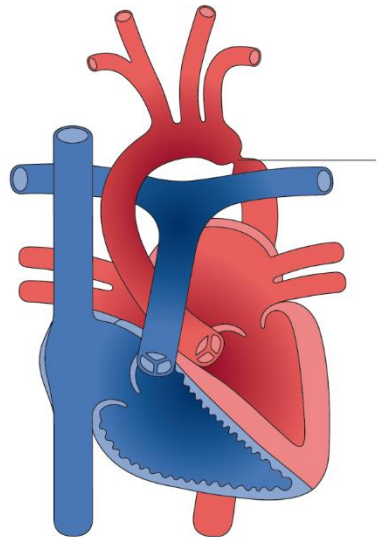


University  
of Basel  
Non-Medical Center

- 1. Describe the altered anatomy and blood flow of this defect**
- 2. What symptoms might you expect to see in a patient if this is not repaired?**
- 3. What surgery/treatment is required?**
- 4. What follow up/future treatment might they have?**

## COARCTATION OF THE AORTA

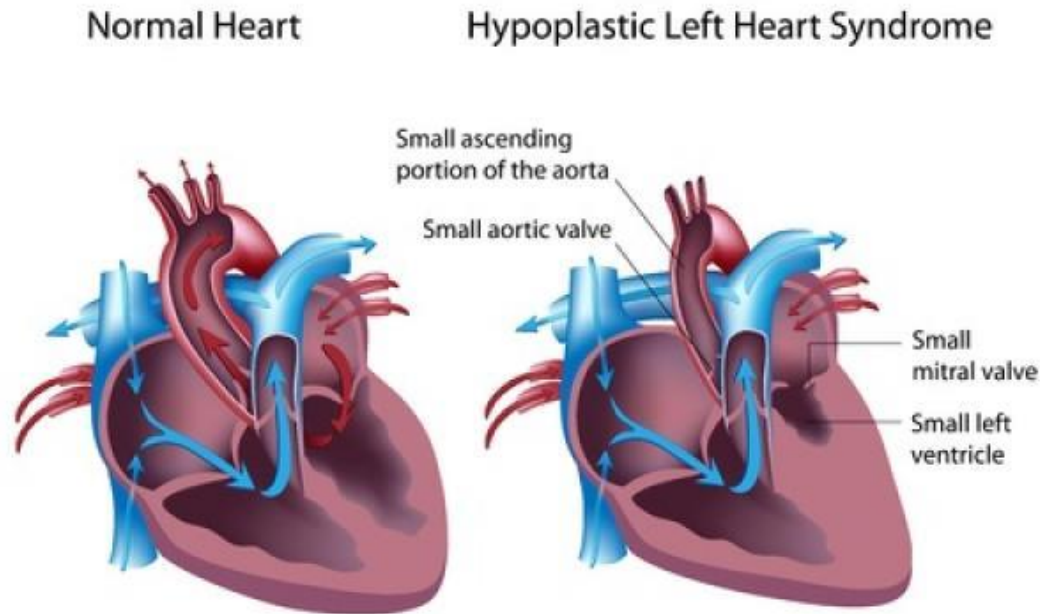
Affecting approximately 6-8% of patients with congenital heart disease, coarctation is often difficult to diagnose antenatally, and babies with severe coarctation may present in the newborn period with acute collapse. Milder forms of the disease may not be evident until adult life.



University  
of Bristol  
New Media Centre

- 1. Describe the altered anatomy and blood flow of this defect**
- 2. What symptoms might you expect to see in a patient if this is not repaired?**
- 3. What surgery/treatment is required?**
- 4. What follow up/future treatment might they have?**

## HYPOPLASTIC LEFT HEART SYNDROME (HLHS)



This condition is very rare (approximately 2% of all congenital heart defects) as well as being one of the most severe and for this reason is more complicated to repair. The term hypoplastic means 'not developed', therefore in hypoplastic left heart syndrome, the left ventricle (the main pumping chamber) and other left sided structures of the heart have not formed adequately to support blood flow to the body.

HLHS is fatal without early intervention and requires frequent monitoring throughout infancy and early childhood to minimise the risk factors. The outcomes for this condition throughout adult life are not yet known as the surgical repair (the Norwood operation) was not established until 1980s. Increasing numbers of young people with this condition are now transferring to adult services.





## Useful Information

### OXYGEN

Many people ask when they should give oxygen to patients with cardiac defects or, more importantly, when should it be avoided.

Firstly, it is necessary to understand the effect that oxygen has on the pulmonary vasculature and what impact that will have on the blood flow for the patient depending on their anatomy.

Oxygen causes vasodilation within the pulmonary circulation and therefore will reduce pulmonary blood pressure. When a patient has a heart problem that has increased pulmonary blood flow, such as a VSD, then reducing the pulmonary pressures can further increase the left to right shunt of blood within the heart. This causes even more blood to flow to the lungs and will exacerbate respiratory compromise. In patients with cyanotic heart lesions this vasodilation may cause 'pulmonary steal' where more blood flows to the lungs and there is an inadequate blood supply to the rest of the body's vital organs.

It is also important to remember that an increase in oxygen pressures will cause constriction of the ductus arteriosus, so oxygen administration should be avoided in patients who are receiving a dinoprostone infusion to maintain patency of the duct.

### **REMEMBER**

Give oxygen in an emergency situation

Think about the effect of giving oxygen on the pressures of the heart in relation to blood flow.

## Bristol Home Monitoring Programme for the South West

The Bristol Cardiac Home monitoring programme is for babies who have a variety of heart defects or lesions that have required palliative surgery/intervention which puts them at high risk for sudden collapse at home.

Once discharged home the child will require saturation monitoring and weight management as prescribed by the cardiac medical team. The parameters are those acceptable for that child in the community.



## Contacts based at Bristol Royal Hospital for Children:

Sheena Vernon, Lead Nurse, Congenital Heart Disease Network: [Sheena.Vernon@uhbw.nhs.uk](mailto:Sheena.Vernon@uhbw.nhs.uk)

Jess Hughes, Lead Nurse, Congenital Heart Disease Network: [Jessica.Hughes@uhbw.nhs.uk](mailto:Jessica.Hughes@uhbw.nhs.uk)

Cardiac Nurse Specialist Team: 0117 3428286

Zoe Trotman, Ward Manager, Dolphin Ward: 0117 3428332

Alison Wood, Cardiac Nurse Educator: [alison.wood@uhbw.nhs.uk](mailto:alison.wood@uhbw.nhs.uk)

Carla Sims and Suzanne Conner, Clinical Support Facilitator, Dolphin Ward: 0117 3428332

Faculty of Children's Nurse Education: [FacultyOfChildrensNurseEducation@uhbw.nhs.uk](mailto:FacultyOfChildrensNurseEducation@uhbw.nhs.uk)

## South Wales and South West CHD Network Website

- Visit the website: [www.swschwcd.co.uk](http://www.swschwcd.co.uk)



- Once on the network website: hold your cursor over the 'professionals' tab which will then show a drop-down menu
- Click on CHD/ACHD Nurses/Link Nurses

## Reference List

Assadi, R. (2013) Conduction System of the Heart. [Online] Available from:  
<http://emedicine.medscape.com/article/1922987-overview> [Accessed 27th July 2020]

Electrical Activity of the Heart. Available from:  
<http://163.178.103.176/Tema1G/Grupos1/GermanT1/GATP13/E7.htm> [Accessed 27th July 2020]

Peate, I. and Gormley-Fleming, E. (2019). *Fundamentals of Children's Anatomy and Physiology*. Somerset: Wiley.

Waugh, A. (2014). *Ross and Wilson anatomy and physiology in health and illness*. Edinburgh: Churchill Livingstone.

White, S. (2014) The Heart Wall. [Online] Available from:  
<http://teachmeanatomy.info/thorax/organs/heart/heart-wall/> [Accessed 7<sup>th</sup> January 2019]

Yen Ho, S. (2013) Anatomy of the Heart. *Textbook of Cardiology*. [Online] Available from:  
[http://www.textbookofcardiology.org/wiki/Anatomy\\_of\\_the\\_Heart](http://www.textbookofcardiology.org/wiki/Anatomy_of_the_Heart) [Accessed 27th July 2020]

[www.nottingham.ac.uk](http://www.nottingham.ac.uk) Cardiology Teaching Package. Available from:  
[http://www.nottingham.ac.uk/nursing/practice/resources/cardiology/function/sinus\\_tachycardia.php](http://www.nottingham.ac.uk/nursing/practice/resources/cardiology/function/sinus_tachycardia.php)  
[Accessed 27th July 2020]

## Cardiac Education Courses

There are cardiac modules available through the Faculty of Children's Nurse Education, based at Bristol Royal Hospital for Children, which you may wish to undertake to increase your knowledge of cardiac anomalies. These are led by the Cardiac Nurse Educator, Alison Wood, who is an experienced cardiac ward nurse.

Children's Cardiac Nursing 1 course covers foundation knowledge of normal cardiac anatomy and physiology, ECG and arrhythmias, as well as considering the common cardiac defects and the care pathways for these patients. This course would be suitable for registered paediatric nurses working regularly with children with infants and children with congenital heart conditions.

Children's Cardiac Nursing 2 is an advanced course aimed at developing a deeper level of understanding of heart conditions including some of the less common defects. This course would suit paediatric nurses working within either a cardiac speciality area or a Paediatric Intensive Care Unit which frequently provides care for children with heart conditions.

For more details you can email directly ([alison.wood@uhbw.nhs.uk](mailto:alison.wood@uhbw.nhs.uk)) or for course dates and availability contact the course administrator ([FacultyOfChildrensNurseEducation@uhbw.nhs.uk](mailto:FacultyOfChildrensNurseEducation@uhbw.nhs.uk)).

## Key Resources - Literature

- Aaronson, P.I., Ward, J.P.T. and Connolly, M.J. (2013) The Cardiovascular System at a Glance (4th Ed.). Chichester: Wiley-Blackwell.
- Cockett, A and Day, H. (Eds.) (2010) Children's High Dependency Nursing. Chichester: Wiley-Blackwell.
- Dixon, M., Crawford, D., Teasdale, D. and Murphy, J. (Eds.) (2009) Nursing the Highly Dependent Child or Infant: A Manual of Care. Chichester: Wiley- Blackwell.
- Everett,A and Lim,S (2011)Illustrated Field Guide to Congenital Heart Disease and Repair(3<sup>rd</sup> Ed).Scientific Software Solutions.
- Gatzoulis, M.A., Swam, L., Therrien, J., Pantley, G.A. and Braunwald, E. (2005) Adult Congenital heart Disease: A Practical Guide. Oxford: Blackwell.
- Gleason, M.M., Rychik, J. and Shaddy, R.E. (2012) Pediatric Practice: Cardiology. New York: McGraw Hill.
- Hazinski, M.F. (2012) Nursing Care of the Critically Ill Child (3rd Ed.). London: Elsevier Mosby.
- Klabunde, R.E. (2012) Cardiovascular Physiology Concepts (2nd Ed). Philadelphia: Wolters Kluwer Health.
- Lissauer, T. and Clayden, G (2011) Illustrated Textbook of Paediatrics (4th Edition). Edinburgh, UK: Mosby.
- MacGregor, J. (2008) Introduction to the Anatomy and Physiology of Children. London, UK: Routledge.
- Macqueen, S., Bruce, A.B., and Gibson, F. (Ed.) (2012) The Great Ormond Street Hospital Manual of Children's Nursing Practices. Wiley-Blackwell: Oxford.
- Mavroudis, C., Backer, C. and Idriss, R.F. (2013) Pediatric Cardiac Surgery (4th Ed). Wiley-Blackwell.
- Miall, L. Rudolf, M. and Smith, D. (2012) Paediatrics at a Glance (3rd Ed). Oxford, UK: Blackwell Publishing.
- Munoz, R., Morell, V., da Cruz, E. and Vetterly, C.G. (Eds) (2010) Critical Care of Children with Heart Disease. Springer.
- Park, M.K. (2014) Park's Pediatric Cardiology for Practitioners (6th Ed).

Philadelphia: Mosby Elsevier.

- Samuels, M., and Wieteska, S. (Ed.) (2011) Advanced Paediatric Life Support (5th Ed.). Oxford: Wiley-Blackwell.
- Thorne, S. and Clift, P. (Eds) (2009) Adult Congenital Heart Disease. Oxford University Press.

## Key Resources – Journals

- American Heart Journal
- Archives of Diseases in Childhood
- British Journal of Nursing
- European Heart Journal
- European Journal of Heart Failure
- Evidence-based child health
- Evidence Based Nursing
- Intensive and Critical Care Nursing
- Issues in Comprehensive Paediatric Nursing
- Journal of Child Health Care
- Journal of Clinical Nursing
- Journal of Advanced Nursing
- Journal of Paediatrics
- Journal of Paediatrics and Child Health
- Journal of Paediatric Nursing
- Nursing in Critical Care
- Paediatrics and Child Health
- Paediatric Clinics of North America
- Paediatric Nursing

## Key Resources - Websites

- <http://mmcts.oxfordjournals.org>
- <http://www.swswhd.co.uk>
- <http://www.dh.gov.uk>
- <http://www.nice.org.uk>
- <http://www.nmc-uk.org>
- <http://www.pted.org/>
- <http://www.rcn.org.uk>
- <http://www.resus.org.uk>

## Cardiac Charities

- British Heart Foundation:  
<https://www.bhf.org.uk/information-support/conditions/congenital-heart-disease>
- Heart Heroes: <https://www.heartheroes.co.uk>
- Little Heart Matters: <https://www.lhm.org.uk>





- Youth at Heart: <https://www.youthatheart.co.uk>

**Are you aged 15 - 24 with congenital heart disease (CHD)? We can offer you and your family support. Please get intouch to connect to our congenital heart disease network, or to just have a chat!**



✉

**contactus@youthatheart.co.uk**

☎

**01452 690 830**

"I found having a youth worker helped distract me from the operation and made me laugh"  
Young Person Feedback



Youth

- INPATIENT VISITS
- OUTPATIENT APPOINTMENTS
- Preparing for surgery or procedure
- **SOMEONE TO TALK TO** about education, employment, benefits & finance
- **HEALTHY LIFESTYLES**
- **OUT IN THE COMMUNITY**, in college or online, we listen!
- **MENTAL HEALTH** issues, anxieties or low mood
- Transition and transfer to adult services
- **MEET OTHERS IN OUR ONLINE CHD YOUTH COMMUNITY**
- Take part in **EVENTS** and **ACTIVITIES**

Family

- **WHOLE FAMILY IN HOSPITAL SUPPORT**
- **IN COMMUNITY** / home visits for whole families
- **INFORMATION** / **JARGON BUSTING**
- **MEET OTHERS IN OUR ONLINE COMMUNITY**

Youth  
@  
Heart

**CONTACT US**

Contact Xander  
ACHD Youth Worker  
07832 668907  
xander@youthatheart.co.uk  
**facebook.com/xander.heart.18**

"The support Youth@Heart offered G wasn't exclusive to his hospital admission, contact has been maintained & for my family in particular, this is an absolutely vital service." Parent

#YOUTH #COMMUNITY #CHAT #INFORMATION #ASKQUESTIONS #SUPPORT

In collaboration with:






W: [www.youthatheart.co.uk](http://www.youthatheart.co.uk)  
E: [contactus@youthatheart.co.uk](mailto:contactus@youthatheart.co.uk)  
@youthatheart22

Charity no: 1158249

## Understanding your child's heart: A series of booklets from the British Heart Foundation



University Hospitals  
Bristol and Weston  
NHS Foundation Trust



Aortic Stenosis



Atrial Septal Defect



Atrioventricular Septal  
Defect



Coarctation of the Aorta



Double inlet left ventricle



Hypoplastic left heart  
syndrome



Ventricular septal defect



Pulmonary atresia with  
intact ventricular septum



Pulmonary atresia with  
ventricular septal defect



Patent ductus arteriosus



Pulmonary stenosis



Single Ventricle



Supraventricular Tachycardia



Transposition of the great  
arteries



Truncus arteriosus



Sammy's heart operation



### To use the QR codes

1. Open your device's camera or download a free QR code reader
2. Point your camera at your chosen QR code
3. The link should open as a pop up!

Try it on the code to the right to go to SWSWCHD network page of the hospitals in the region  
Please provide feedback on this poster by scanning the code on the left




















A printer friendly version of this poster is available for download from the network website: [www.swswchd.co.uk](http://www.swswchd.co.uk)

Understanding your heart:  
A series of booklets from the  
British Heart Foundation

Bristol Royal Hospital  
For Children

**NHS**  
University Hospitals  
Bristol and Weston  
NHS Foundation Trust


			
"Straight from the heart"	Arrhythmias	Aortic Stenosis	Atrial Septal Defect
			
Coarctation of the Aorta	Hypoplastic left heart syndrome	Implantable cardioverter defibrillator (ICD)	Long QT syndrome
			
Pulmonary atresia with intact ventricular septum	Pacemakers	Pulmonary stenosis	My heart operation
			
Transposition of the great arteries	Transition to adult services	Tricuspid atresia	Ventricular septal defect



**To use the QR codes**

1. Open your device's camera or download a free QR code reader
2. Point your camera at your chosen QR code
3. The link should open as a pop up!

Try it on the code to the right to go to SWSWCHD network page of the hospitals in the region  
Please provide feedback on this poster by scanning the code on the left



A printer friendly version of this poster is available for download on the network website [www.swswchd.co.uk](http://www.swswchd.co.uk)

## Feedback on our Cardiac Workbook

We would love feedback on our work book. Please email [carla.sims@uhbw.nhs.uk](mailto:carla.sims@uhbw.nhs.uk) with any suggestions of improvements/material you would like us to add that would be useful.

## Copyright

- The owner of this Paediatric Cardiac Workbook is the South Wales and South West Congenital Heart Disease Network / Carla Sims at Bristol Royal Hospital for Children
- The images in this resource are **not** owned by South Wales and South West Congenital Heart Disease Network / Carla Sims at Bristol Royal Hospital for Children but by those referenced.

**We hope you have enhanced your Paediatric Cardiac Knowledge by completing our Cardiac Workbook**

**Thank you**