

# Dental Care for Adults with Congenital Heart Disease

A draft care pathway

Mick Allen

Consultant in Special Care Dentistry

# Standards L1, L2, L3

- Common themes.
  1. Appropriate evidence-based dental advice at time of Dx. Cardiologist or nurse
  2. Pre-procedure dental assessment.
  3. Specialist follow-up for patients at increased risk of IE
  4. Clear pathway for acute dental care-pain; infection; trauma
  5. 72 hour window for dental assessment of patients with admitted with IE.
  6. Theatre availability for dental Tx with GA.



# Dental Care for Adults Groups and challenges

- General Dental Services – NHS, Private or Mixed. NHS services fixed target-based contract value. Once achieved, no further money. Where nearly all patients should be seen. Commissioning.
- Community Dental Services – Specialists and/or Consultants in Special Care Dentistry; SDOs; StRs. More complex patients – LD; anxious; movement disorders; drug misuse.
- Hospital Dental Services- Special care in UDH and BDH; OMFS (all centres) and limited restorative care provision (Morrison; UDH;BDH)
- Cardiology teams giving dental advice.

# Challenges

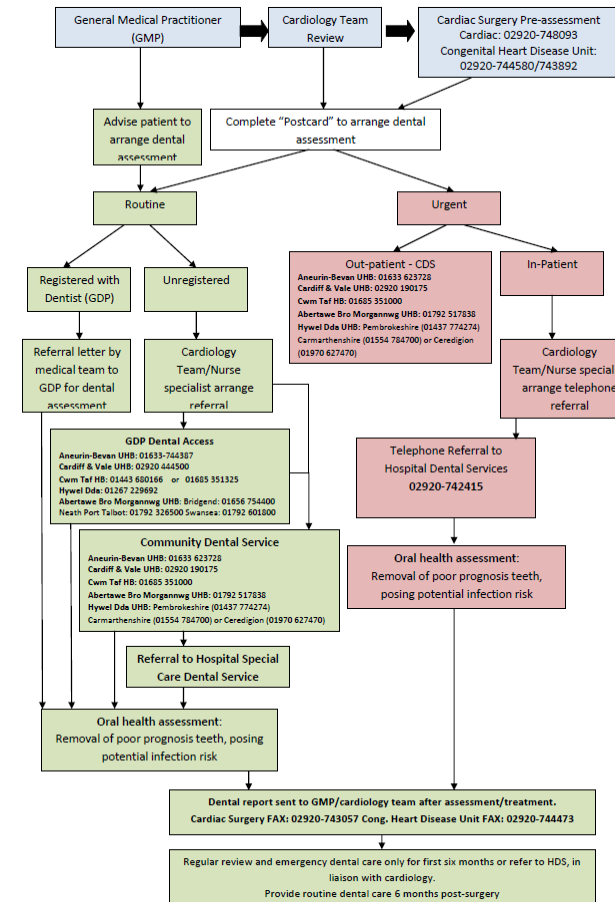
## General Dental Services

- Drive in NHS to move care to closer to home.
- Limited NHS provision in many areas.
- Contractual restrictions.
- Worries from GPs around medical emergencies, ABC and NOACs.  
(Education)
- Sharing care.
- Differing systems across Wales and England (free exams 18-25, 60+; contract reform).



# Adult care pathway

- Based on existing work on pre-surgery pathway by Grace Kelly Senior Lecturer/Hon.Con. Cardiff University School of Dentistry
- MCNs in SCD – GDPs; Commissioners; SCD specialists
- Additions to meet Standards in NHS England CHD document.



# Dental Care Pathway for Adults with Congenital Heart Disease

- Referral through CDS hub
- Advice for GPs managing patients taking NOACs and/or needing ABC (SDCEP and NICE)
- Guidance for commissioners including shared care and sedation.
- Dental clinical advice.
- Sample patient post card for Cardiology team.
- Sample completion of dental assessment letter.
- Guidance for care of in patients.

# Evaluation.

- Assessment of quality of referrals.
- PROMS/PREMS.
- Feedback from cardiology teams to commissioners/local SCD Specialists.
- Annual revision of guidance for CHD network.

