



South Wales and South West
**Congenital Heart
Disease Network**

Role & Function of the Board

Network Board, 1st May 2019

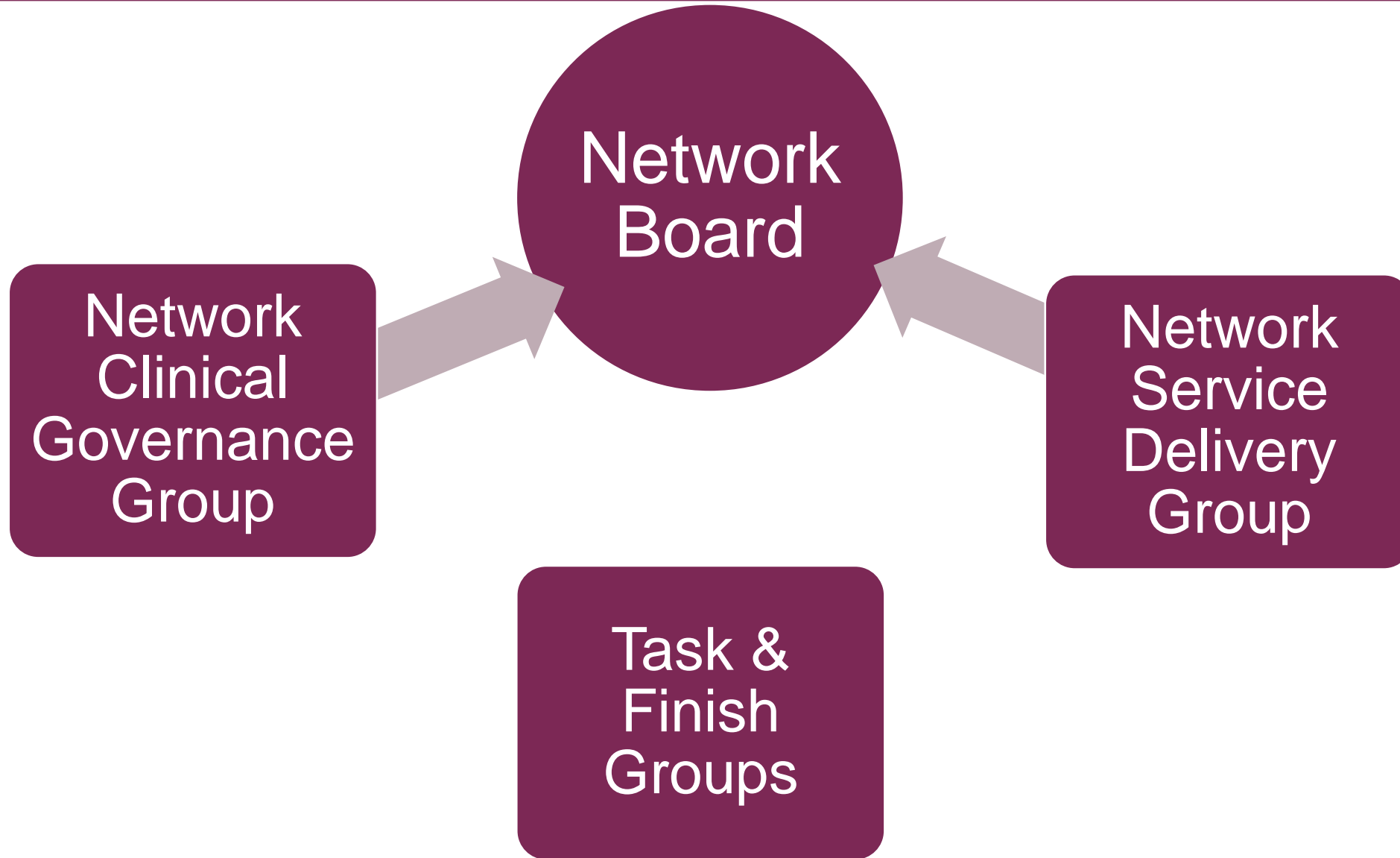
Cat McElvaney, Interim CHD Network Manager



The Previous Network Board Structure- a recap

Strengths	Weaknesses
Good representative of stakeholders	Infrequent for core team
Good general engagement	Lack of time for detail/can feel rushed
Broad range of topics covered	Limited opportunity for members to contribute
Making progress	Some inconsistency of membership
	Range of issues covered too broad
	Lack of accountability?
Opportunities	Threats
To break functions into smaller groups able to get into detail	Issues may fall through gaps
To have focused task and finish groups for defined short term projects	The groups don't interface properly
To use members' expertise & interests more	May have inconsistent membership
Better rhythm of meetings for Network team	
Greater accountability	

Agreed Network Board Structure

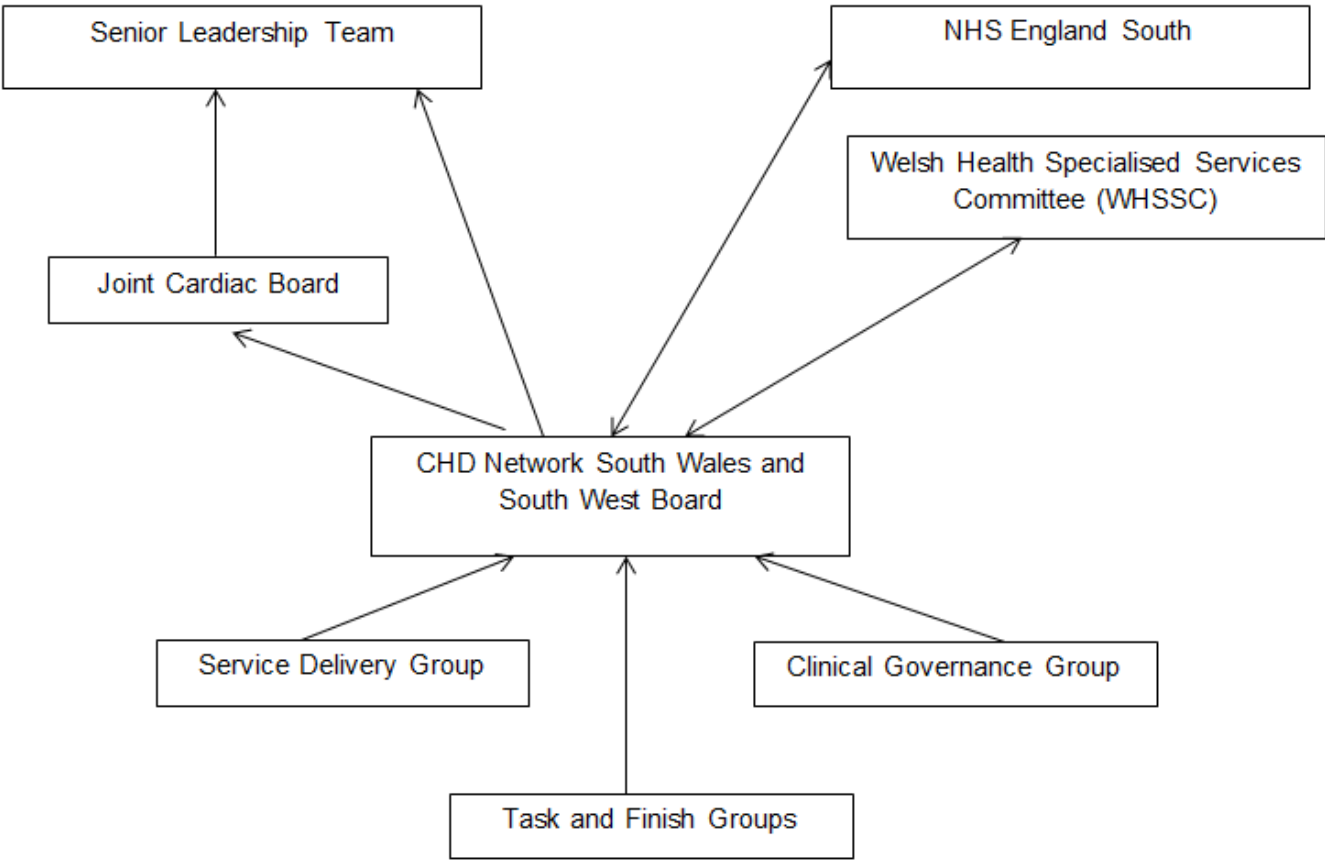


Network Governance

3.4 Diagram representing accountability:

Host Trust: University Hospitals Bristol

Commissioners



Remit of each group

Network Board	Network Clinical Governance Group	Network Service Delivery Group	Task & Finish Groups
Overall responsibility	Education and training programme	Standards & self-assessments	Specific tasks or projects
Escalation of concerns	Incident management and learning	Performance and capacity	Defined lifespan
Risks	Annual M&M	Workforce issues	For example:
Strategic direction	Audit programme	The website and other technology projects	Paediatric protocols group?
Performance assurance	Clinical pathways, protocols, guidance	Patient engagement and support groups	Discharge communications reference group?
Centres', commissioners, charity etc. updates	Patient leaflets and pathways	Finance/Tariffs etc	

Evaluation of the New Board Structure

- Agreed 1 year post implementation
- Commenced with Clinical Governance Group 11th Sept '18
- Plan Sept '19, conduct evaluation Oct '19
- Survey with Network Members
 - Vote on future structure
 - Stay the same
 - Revert to old structure
 - New option (Network Board AM, Clinical Governance Group & Service Delivery Group in PM)



South Wales and South West
**Congenital Heart
Disease Network**

Thank you & Questions

