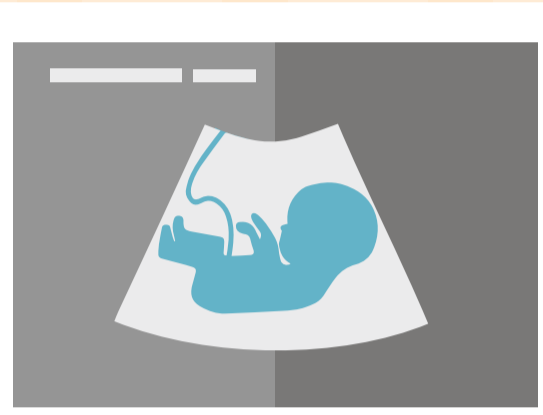


# your FETAL PATHWAY

The pathway below tells you more about what happens when you are referred to an antenatal cardiac clinic. Your team may first talk to you about this in your local clinic and then refer you to Bristol Children's Hospital for specialist care.



If your antenatal team are concerned your baby may have a heart condition they will refer you for a specialist heart scan.



You will be invited to an antenatal cardiac clinic to have the heart scan by a specialist cardiac sonographer.



If your scan shows your baby has a normal heart structure then you will be looked after by your local antenatal team.

## OPTIONS:



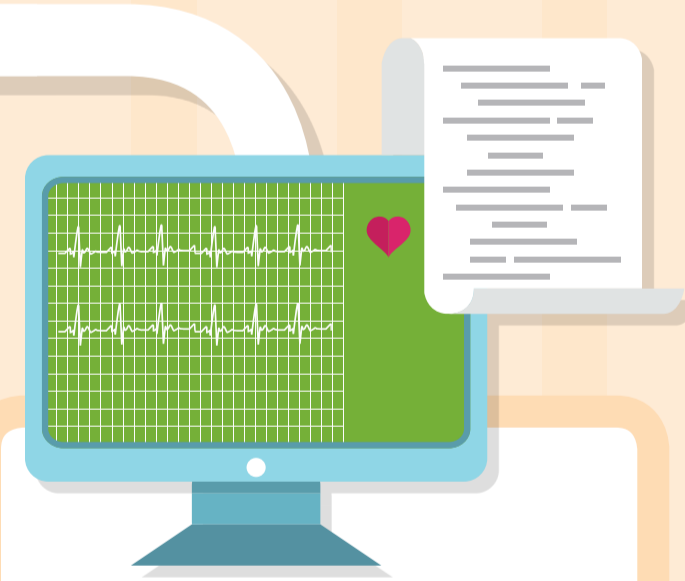
If the scan shows that your baby has a heart condition, your cardiologist will talk to you about the options for treatment and care. You may see a fetal medicine specialist, a cardiac nurse specialist and a geneticist.



Your team may talk to you about coming to St Michaels to have your baby where specialist care is available.



You may have your baby locally and come to Bristol for specialist treatment when needed.



Your baby may not initially need specialist care but will be monitored by the cardiac team for potential treatment later in life.

If the team feel your baby needs treatment or monitoring they will follow one or more of the pathways below.

your  
**OUTPATIENT  
PATHWAY**

your  
**CATHETER  
PATHWAY**

your  
**SURGICAL  
PATHWAY**

your  
**INPATIENT  
PATHWAY**