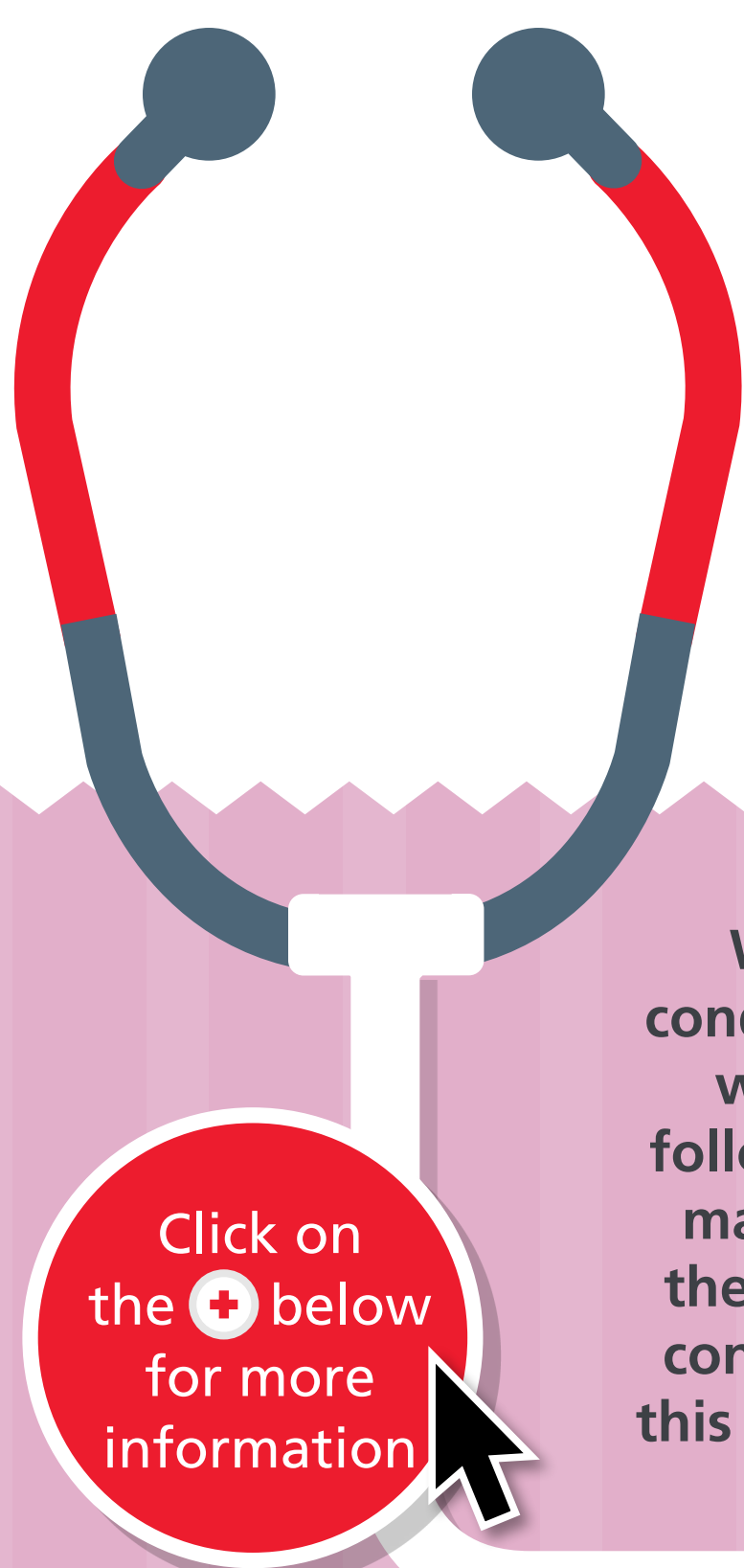


your **CARDIAC PATHWAY**



When your child is diagnosed with a cardiac condition you may not know what to expect (who will you see and what will happen next). The following diagram shows the different routes you may take in the cardiac service. You can click on the boxes below to find out more information or contact us. Your team may first talk to you about this in your local clinic and then refer you to Bristol Children's Hospital for specialist care.

You may first come into contact with the cardiac team or hear about us through:



**Your
antenatal
medical
team**



**Your medical
team in the
Emergency
Department**



**Your GP or
paediatrician who
may refer you
to an outpatient
clinic locally to you**

If your medical team are concerned that your baby or your child has a heart condition then they will have further investigations and may follow one or more of the pathways below



**Investigation
information**



your
**FETAL
PATHWAY**

your
**OUTPATIENT
PATHWAY**

your
**CATHETER
PATHWAY**

your
**SURGICAL
PATHWAY**

your
**INPATIENT
PATHWAY**

If there are times when you have questions or would like some additional support then click here

support +

your
**OUTPATIENT
PATHWAY**

The pathway below tells you more about what happens when your child is an outpatient. Your team may first talk to you about this in your local clinic and then refer you to Bristol Children's Hospital for specialist care.



Your cardiologist may want to monitor your child's heart condition in an outpatient clinic locally to you.



You will be sent a letter with a time date and location of the appointment.



When you attend your child may be asked to undergo investigations in the appointment, or investigations might be arranged over the following few weeks. This information helps your cardiologist plan the next steps of treatment or monitoring for your child.



You will be sent a summary of the appointment by letter and the date of your next appointment.

If there are times when you have questions or would like some additional support then click here

support +

your CATHETER PATHWAY

The pathway below tells you more about what happens when your child has a cardiac catheter. Your team may first talk to you about this in your local clinic and then refer you to Bristol Children's Hospital for specialist care.




Click on
the  below
for more
information

RISKS AND BENEFITS



When you meet your child's cardiologist they may suggest that your child undergo a cardiac catheterisation. They will talk to you about the reason for this and the risks and benefits.




You will receive a letter with a date for your admission and an invitation to attend the pre admission clinic



DOLPHIN WARD

Transfer to
Dolphin ward



Before you are discharged you will be given aftercare advice and a follow up plan

the
**OUTPATIENT
PATHWAY**

If there are times when you have questions or would like some additional support then click here

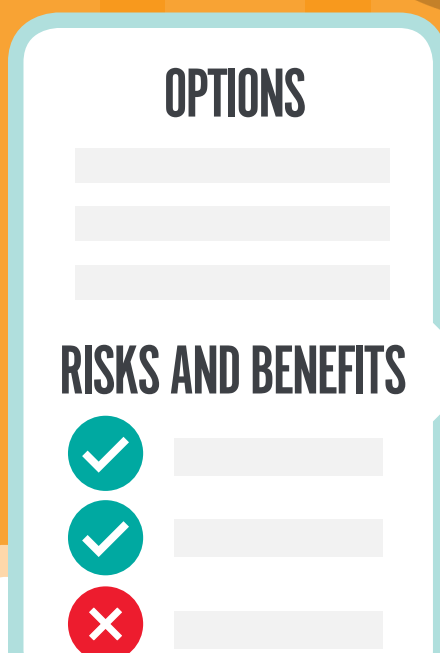
support 

your SURGICAL PATHWAY

The pathway below tells you more about what happens when your child has cardiac surgery. Your team may first talk to you about this in your local clinic and then refer you to Bristol Children's Hospital for specialist care.



Click on the + below for more information



If the team feel your child requires surgery, then you will be asked to attend a surgical clinic to talk through the options and risks and benefits of surgery.



Following the surgical clinic you will receive a letter summarising your surgical clinic appointment. When the date for surgery is planned you will receive a letter inviting you to attend the pre-admission clinic and informing you of your child's admission date.



Transfer to the operating theatre



Transfer to Dolphin ward - High Dependency Unit




Before leaving the ward we will talk to you about aftercare and the plan for your 2 week follow up appointment.

the OUTPATIENT PATHWAY

If there are times when you have questions or would like some additional support then click here

support +

your INPATIENT PATHWAY

Click on
the  below
for more
information

The pathway below tells you more about what happens when your child follows the inpatient pathway. Your team may first talk to you about this in your local clinic and then refer you to Bristol Children's Hospital for specialist care.

DAY CASE

LONGER STAY



When you meet your child's cardiologist, they may ask you to come to Dolphin ward for investigations or supportive treatment.

You will be admitted under the care of a cardiologist who will manage your care. They will keep you informed and discuss any treatment plans with you.

TREATMENT PLANS

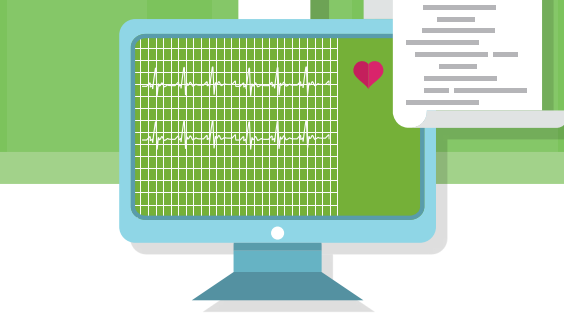


You will receive a letter with the date of your admission and details of why you are being admitted.

DOLPHIN WARD

Unplanned/ emergency admission:

Once you get to Dolphin ward we will make sure you have all the help support and information you need during your stay. You will get to meet the team who are looking after you who will be able to answer any questions you may have.



You will have your procedure and will be monitored closely for a period of time.



Once the doctors and nurses are happy you have fully recovered you will be able to go home. This can sometimes be the same day or if necessary you may have to stay with us overnight and go home the next morning.



As well as nurses and doctors there are other team members who play an important part in your hospital stay. These are: ward sister/matron, cardiac nurse specialist, psychologist, physio, dietician, play specialist, pharmacists, hotel service assistants, ward clerk, friends for parents (volunteers).



Aftercare information: We will give you all the information you will need to continue your recovery at home. You will also get details of any medications and when you will next be seen in clinic for follow up.

If there are times when you have questions or would like some additional support then click here

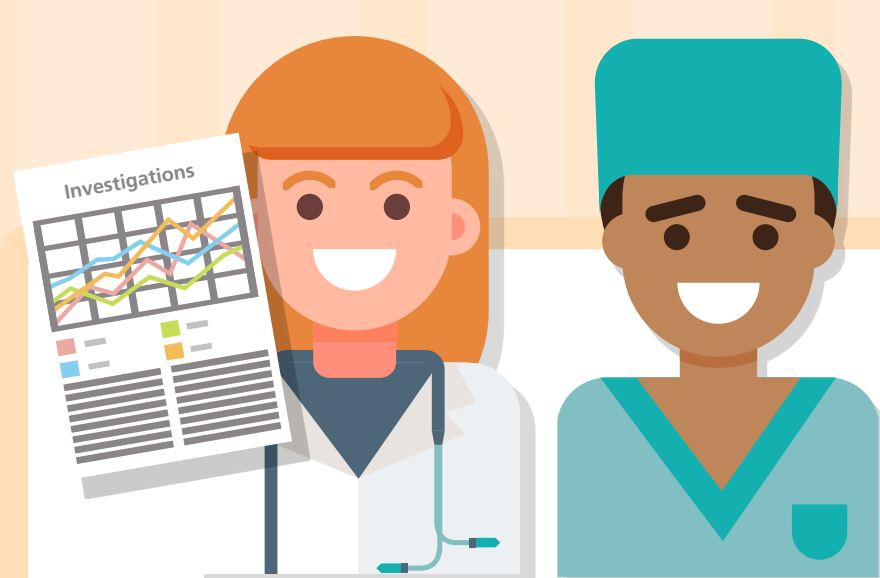
support 

your FETAL PATHWAY

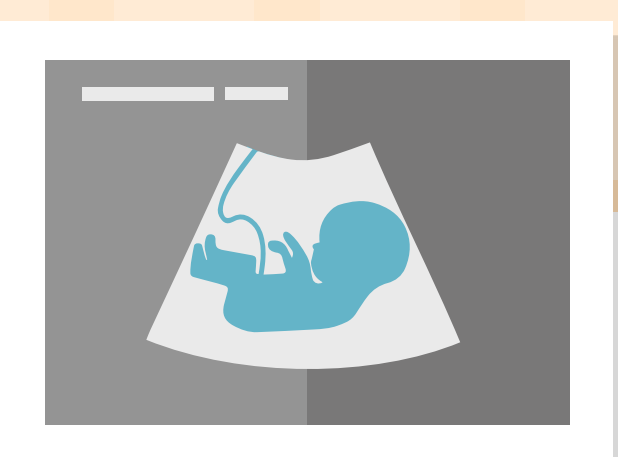
The pathway below tells you more about what happens when you are referred to an antenatal cardiac clinic. Your team may first talk to you about this in your local clinic and then refer you to Bristol Children's Hospital for specialist care.



Click on the  below for more information



If your antenatal team are concerned your baby may have a heart condition they will refer you for a specialist heart scan.



You will be invited to an antenatal cardiac clinic to have the heart scan by a specialist cardiac sonographer.



If your scan shows your baby has a normal heart structure then you will be looked after by your local antenatal team.

OPTIONS:



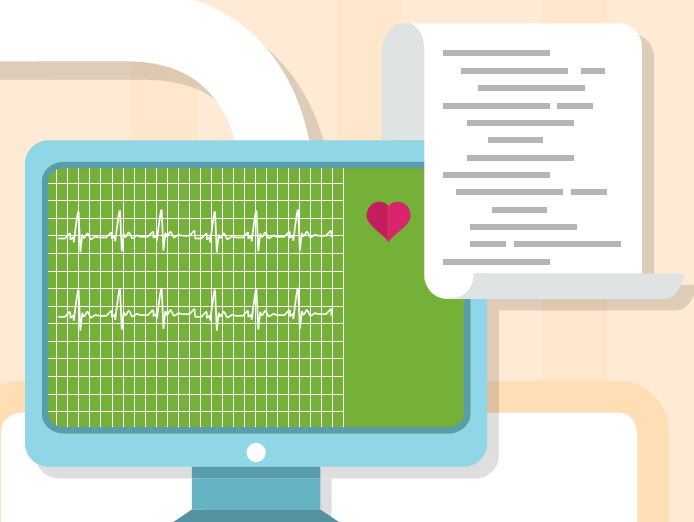
If the scan shows that your baby has a heart condition, your cardiologist will talk to you about the options for treatment and care. You may see a fetal medicine specialist, a cardiac nurse specialist and a geneticist.



Your team may talk to you about coming to St Michaels to have your baby where specialist care is available.



You may have your baby locally and come to Bristol for specialist treatment when needed.



Your baby may not initially need specialist care but will be monitored by the cardiac team for potential treatment later in life.

If the team feel your baby needs treatment or monitoring they will follow one or more of the pathways below.


your
**OUTPATIENT
PATHWAY**


your
**CATHETER
PATHWAY**


your
**SURGICAL
PATHWAY**


your
**INPATIENT
PATHWAY**

If there are times when you have questions or would like some additional support then click here

support 